

● beach tile square >S1

4.0" x 4.0" x 0.3"
9.0 pieces/sqft
tile surface > textured

Beach Tile offers our unique texture, reflective of sand washed beach glass, a subtle color range, and a ravishing interplay of different finishes, depths and shapes.

Additionally, we offer a technologically advanced, opaque backing (ordinary glass tiles are translucent), ensuring unchanged, pristine colors after an easier, faster installation. It means our glass tiles are installed just like ceramic tiles.

The result is an exciting interaction of light – where surface, color, line and texture combine in unmistakable sophistication



beach tile rectangle > R2

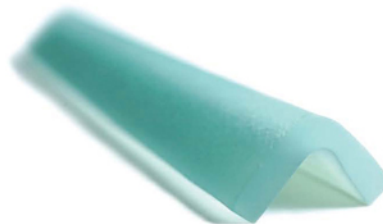
8.0" x 4.0" x 0.3"
4.5 pieces/sqft
tile surface > textured



glass trims > TR1, TR4, TR5



TR1 >
pencil bar (frosted)
0.8" x 8.0"



TR4 >
external right angle (textured)
0.1" x 0.1" x 8.0" x 0.3"



TR5 >
internal quarter round (textured)
1.6" x 8.0" x 0.3"

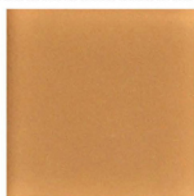
colors



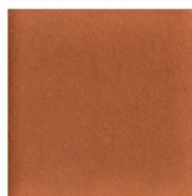
citrus



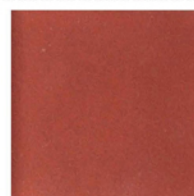
estuary



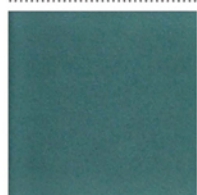
mango



guava



coral



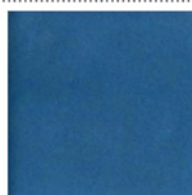
lagoon



spa



spring



sky



fresh



smoke



horizon



reed



seagrass



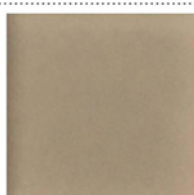
moss



frangipani



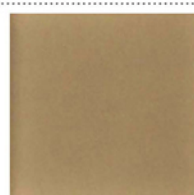
mist



soapstone



cement



sand



pure silk



stratos



breeze



dusk



ebony

Note: Please refer to the product directory for colors held in stock & for ordering non-stock colors.



glass tile series

*All installation should meet or exceed guidelines and specifications as outlined by the TCNA (www.tileusa.com)

Island Stone Glass Tile is handmade and kiln-fired. Some batch variation is natural. Inspect the product before installation, as use implies acceptance and no claim can be acknowledged after installation.

Points below are a general guide only. Please contact your Island Stone showroom if you need more detail. The tiles are installed similarly to high grade porcelain tiles, but they are less forgiving of poor preparation or workmanship. Installation must be prepared and carried out carefully. As glass expands more than ceramic, ensure adequate expansion control joints including the perimeter.

Maximum distance between joints:

- Internally 20-25 feet (6-7.5 meters)
- Externally 8-12 feet (2.5-3.5 meters)
- Grout joints should be a minimum 1/16 inch (1.5-2 millimeters)

fixing

Island Stone's advanced glass backing allows installation over a combed thin-set bed as per standard ceramics. Use a white, latex modified thin-set mortar with high flexibility. With grey adhesive, some slight tonal shading may occur. Mix adhesives in strict accordance with the manufacturer's instructions.

Note: Due to the impervious nature of glass, you may need extended drying times.

cutting

Straight cuts need quality "score and snap" tile cutters. Those with a "T bar" lever action from above are best, e.g. Sigma brand. Those splitting by a point rising from beneath often result in chipping. Sharp edges should be dressed with a diamond stone. Cut outs and difficult cuts need LOW revolution (3500 -3800 rpm) wet saws with continuous rim diamond blades, e.g. Makita brand, model 4190DW.

Cutting Tip: Glass cuts better when warm. Drilling requires water-cooled machines of low revolution speeds. Water-swivels fitted with hollow diamond core bits are best.

grouting

Tile edges are transparent, so grout color can influence the color effect of tiles. Use grouts matching or tonally lighter than the tile color. Grout only when the adhesive has cured to a strong bond. Grouts should form part of a complete system as recommended by the adhesive provider. In exterior, wet, submersed or high vibration uses, use polymer/latex to modify the grout.

Grout an area that can be readily cleaned at a time. Clean up by wiping with a coarse, segmented (slit) sponge that is damp, but not wet. Wipe in a diagonal direction. Keep the sponge flat and wipe in short strokes. Rinse thoroughly between strokes. Avoid dragging grout from the joints. As glass is impervious, grout joints may dry slower than grout on the tile surface. Use a dry cloth for final polishing.

Recommended grouts:

Island Stone recommends using sanded grouts from a quality manufacturer.

New Urethane Grouts have also been very easy to use.

Carefully read use and clean up instructions before installing.

Avoid using un-sanded grouts when installing glass as these can be more difficult in clean up.

grout cleaning

Grouting glass requires extra care in clean up to remove any unwanted grout from surface. Pay special attention to glass with a textured surface or if modified grouts have been used. Grout left on the surface will shadow on the tile back. Grout on a textured surface can be hard to see if the surface is damp. Check carefully to ensure all excess has been removed.

NOTE: In the case of grouts modified with an acrylic additive, excess left on surface to harden will be extremely difficult to remove!

Recommended approach for cleaning off grout haze:

After initial application and proper clean up, allow grout to harden overnight.

NOTE: Do not wait longer than 1 day for the final cleaning, as hardened grout is extremely difficult to clean off!

Apply a properly diluted sulfamic acid solution to tile surface using a brush or spray bottle. Follow manufacturers instructions to insure proper solution mix.

Allow solution to sit for 2 minutes or more before rigorously scrubbing the surface of the glass with a small scouring sponge or a small brush.

Clean with water and a clean sponge.

Sulfamic Acid:

This mild cleaning acid is available at your local tile showroom or hardware store under the brands of AquaMix or TileCare. Follow the simple safety directions.